



*Solving
Ventilation Problems
Worldwide*

DIRECT DRIVE VENTILATION UNITS

Designed for large volume circulation, the 12" to 24" direct drive fans meet all OSHA specifications. These rugged units are designed for operation in any position and are ideal for all commercial and domestic facilities. These units offer minimum maintenance and efficient, economical operation in all weather conditions. They are ideal for inaccessible areas where servicing is difficult.

Features:

- Fully assembled. Ready to operate.
- Each size fan has its own properly matched, formed venturi for highest possible performance.
- Heavy gauge, corrosion resistant aluminum blade.
- Sturdy, all welded construction, steel frame.
- Corrosion resistant powder coated finish.
- Rugged safety guard standard with each model.
- Easy installation.
- All two speed models come equipped with necessary control or switch.
- All motors are totally enclosed with built-in automatic reset overload protection.



D20



D24



D16



D12

Blade Size	Model	H.P.	R.P.M.	Shp. Wgt.	0" S.P.	CFM 1/8" S.P.	1/4" S.P.
12	D1207	1/15	1050	20	1305	750	430
	D1607	1/15	1050	27	1560	1170	880
16	D1625	1/4	1725	32	2690	2460	2250
	D1625-2	1/4-1/12	1725-1140	36	2690-1780	2460-1460	2250-1200
	D2025	1/4	1725	35	3100	2780	2430
20	D2025-2	1/4-1/12	1725-1140	39	3100-2055	2780-1860	2430-1590
	D2033	1/3	1725	37	3920	3520	3170
	D2033-2	1/3-1/9	1725-1140	46	3920-2590	3520-2330	3170-2100
	D2425	1/4	1725	43	3680	3250	2460
24	D2425-2	1/4-1/12	1725-1140	47	3680-2440	3250-1990	2460-1630
	D2433	1/3	1725	45	4390	4070	3800
	D2433-2	1/3-1/9	1725-1140	54	4390-2900	4070-2690	3800-2510
	D2450	1/2	1725	50	5020	4720	4450
	D2450-2	1/2-1/6	1725-1140	57	5020-3320	4720-3120	4450-2940

Dimensions:

Blade Size	Width	Height	Depth
12	16	16	9
16	20	20	13
20	24	24	14
24	28	28	16

NOTE: All models shown with -2 are two speed and include switch.

BELT DRIVE VENTILATION UNITS

Rugged, long lasting belt driven ventilation units are available in three sizes ranging from 24" to 36". They meet all OSHA specifications and will operate in either the vertical or horizontal position.

Designed to move large volumes of air economically, these units require minimum maintenance and are operational in all weather conditions.

Features:

- Fully assembled. Ready to operate.
- Each size fan has its own properly matched, formed venture for highest possible performance.
- Heavy gauge, powder coated steel blade or spark resistant polypropylene blade.
- Sturdy, all welded construction, steel frame.
- Corrosion resistant powder coated finish.
- Easy installation.
- Complete line of accessories.
- All two speed models come equipped with the necessary switch.
- All motors are totally enclosed, have ball bearings, and built-in automatic reset over load protection.



B36

Dimensions:

Blade Size	Width	Height	Depth
24	28	28	22
30	34	34	22
36	42	42	22



B30



B24

Blade Size	Model	H.P.	R.P.M.	Shp. Wgt.	0" S.P.	CFM 1/8" S.P.	1/4" S.P.
24	B2425	1/4	635	62	3590	2810	1875
	B2425-2	1/4-1/12	635-420	67	3590-2370	2810-1860	1875-1250
	B2433	1/3	680	64	3850	3010	2010
	B2433-2	1/3-1/9	680-450	73	3850-2540	3010-1940	2010-1330
30	B3025	1/4	455	68	4900	4400	2660
	B3025-2	1/4-1/12	455-300	73	4900-3230	4400-2900	2660-1755
	B3033	1/3	500	70	5390	4840	2920
	B3033-2	1/3-1/9	500-330	79	5390-3560	4840-3200	2920-1930
	B3050	1/2	635	75	6850	6160	4110
	B3050-2	1/2-1/6	635-420	82	6850-4530	6160-4070	4110-2720
	B3075	3/4	680	88	7330	6596	4400
	B3633	1/3	380	89	6320	5680	3700
36	B3633-2	1/3-1/9	380-250	98	6320-4170	5680-3750	3770-2490
	B3650	1/2	445	94	7370	6620	4400
	B3650-2	1/2-1/6	445-290	101	7370-4860	6620-4370	4400-2900
	B3675	3/4	505	107	8370	7520	4990
	B36100	1	540	113	9220	8400	6680
	B36150	1-1/2	655	119	10860	10430	9720

NOTES: 1. Final low speed settings are made at installation. 2. All models shown with -2 are two speed and include switch.

EXPLOSION PROOF MODELS

Rugged, dependable Jenny explosion proof fans are available in either direct driven 16 and 20 inch models or belt driven 24 inch models. All models feature totally enclosed explosion proof motors and are designed for years of worry-free operation.

These units conform to all OSHA specifications. All explosion proof fans are equipped with a spark resistant polypropylene blade.



D16X



D20X



B24X

Features:

- Fully assembled. Ready to operate.
- Each fan has its own properly matched, formed venturi for highest performance.
- Spark resistant polypropylene blade has a rugged cast aluminum hub.
- Sturdy, all welded construction steel frame.
- Corrosion resistant powder coated finish.
- Rugged safety backguard standard on direct drive models.
- Variable speed models with solid state variable speed control.
- All models have totally enclosed fan cooled explosion proof motors with built-in automatic reset overload protection. Motors are UL listed for Class 1, Group D and Class II, Groups E, F and G atmospheres.

Dimensions:

Blade Size	Width	Height	Depth
16	20	20	9
20	24	24	13
24	28	28	22

Blade Size	Model	H.P.	R.P.M.	Shp. Wt.	0" S.P.	CFM 1/8" S.P.	1/4" S.P.
16	D1633X	1/3	1725	42	3110	2990	2800
	D1633XV	1/3	1650-500	49	2920-900	2810-865	2630-812
20	D2033X	1/3	1725	45	4375	4180	3320
	D2033XV	1/3	1650-500	52	4110-1270	3930-1210	3120-905
24	B2433X	1/3	1100	73	4900	4730	4400
	B2433XV	1/3	1050-600	80	4690-2680	4520-2590	4200-2402
	B2450X	1/2	1250	77	5580	5390	5000

NOTE: All models shown with -V are variable speed and include control.

24" TUBE AXIAL UNITS

The Jenny belt driven tube axial fans are designed to quickly exhaust fumes, smoke, dust, abrasive and corrosive atmospheres. These minimum maintenance units provide years of dependable service and are designed to operate in any position. All units are delivered completely assembled for easy installation.

Features:

- Improves safety.
- Heavy mesh construction.
- Completely encloses rear of fan.

Dimensions:

Fan Size	Actual Blade Size	Outside Diameter	Inside Diameter	Length
24"	23-1/2"	27"	24"	18"



TA24

Model	H.P.	R.P.M.	Shp. Wt.	0" S.P.	1/8" S.P.	1/4" S.P.	CFM			
							3/8" S.P.	1/2" S.P.	5/8" S.P.	3/4" S.P.
TA2450	1/2	1380	110	6120	6000	5820	5640	5310	5110	4940
TA2450X	1/2	1380	118	6120	6000	5820	5640	5310	5110	4940
TA2475	3/4	1640	123	7260	7120	6910	6700	6300	6070	5870
TA2475X	3/4	1640	123	7260	7120	6910	6700	6300	6070	5870
TA24100	1	1810	129	8030	7875	7640	7400	6970	6700	6490
TA24100X	1	1810	131	8030	7875	7640	7400	6970	6700	6490
TA24150	1-1/2	1900	137	8410	8250	8000	7750	7300	7030	6800

PORTABLE EJECTOR MODELS

The portable ejector fan is a rugged and simple device designed to control ventilation by either exhausting air out or forcing fresh air in. The blade design provides for sure operation under severe conditions. Motors are available in either totally enclosed or explosion proof. The units conform to OSHA regulations and are easily portable. Areas of application range from farm and industry to fire and emergency police.



P16

Blade Size	Model	H.P.	R.P.M.	Shp. Wgt.	0" S.P.	1/8" S.P.	CFM	
							1/4" S.P.	1/2" S.P.
16	P1633	1/3	1725	47	3110	2990	2780	2350
	P1633X	1/3	1725	55	3110	2990	2780	2350
20	P2050	1/2	1725	58	4400	4270	4180	3340
	P2050X	1/2	1725	65	4400	4270	4180	3340

Flexible duct hose is available for both the 16" and 20" portable ejector fans. These durable hoses are available in 20 foot lengths and provide the ability to intake or exhaust air through an opening some distance away. The hose is quickly connected to a mounting flange by a single clamp. The mounting flange and hardware are included with the hose. The hose is disconnected and easily collapsed for convenient storage. It should be noted that when a duct hose is added to a fan, it will increase resistance and reduce the cubic feet per minute of air the fan will move.



Fan Size	Hose Model	Fan used on	Shp. Wt.	Fan performance - CFM	
				Without Hose	With Hose
16	PD16	P1633	27	3110	2850
20	PD20	P2050	38	4400	4300

ACCESSORIES

Backguards

- Improves safety
- Heavy mesh construction.
- Completely encloses rear of fan.



Belt Drive Fans (24 to 36 inches)

Blade Size	Model	Shipping Weight
24	BG24	32
30	BG30	43
36	BG36	55

Direct Drive Fans (12 to 24 inches)

Blade Size	Model	Shipping Weight
12	G12	3
16	G16	6
20	G20	7
24	G24	10

Switches

VS-6

Solid state variable speed control for use on variable speed fans. 120v 6 A.

NOTE:
Can not be used on all models.



AW2

Two speed remote switch mounts in electrical box. Includes cover plate. (3/4 hp max.)

Thermostats



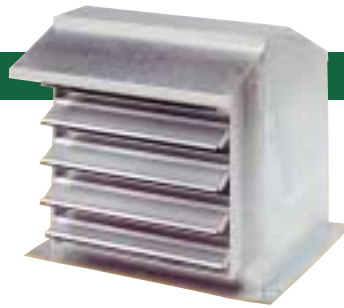
Honeywell T63

1/2 hp contact rating
2° differential
35° – 100° range, wt. 2 lbs.
Model T63A – single-speed
Model T63B2 – two-speed

Penthouse

16 to 36 inches

- Heavy gauge weather-proof galvanized steel.
- Comes complete, including shutter. Fully assembled, unless otherwise specified.
- Use with either direct drive or belt drive wall type fans.
- Shipped as a complete ventilation unit when ordered with a fan. Fan, shutter and penthouse come assembled.



Automatic Shutters

Wall Type

- Extruded aluminum frame
- Formed aluminum blades with felt backing
- Low maintenance cost, no painting required.
- Motorized units are wired for 115 volt.



Fan Size	Model	Overall Dimensions (inches)			Minimum Curb Size (inches)	Maximum Roof Opening (inches)	Shp. Wgt.
		H	W	L			
16	PH16	20 3/4	24 3/8	18	24 3/8 x 18	20 3/8 x 14	28
20	PH20	24 3/4	27 3/8	21	27 3/8 x 21	23 3/8 x 17	38
24	PH24	28 3/4	31 3/8	25	31 3/8 x 25	27 3/8 x 21	50
30	PH30	34 3/4	38 3/8	31	38 3/8 x 31	34 3/8 x 27	80
36	PH36	42 3/4	46 3/8	37	46 3/8 x 37	42 3/8 x 33	100

Type	Blade Size	Model	Estimated Shp. Wt.
Automatic	12	A-12	4
	16	A-16	5
	20	A-20	7
	24	A-24	9
	30	A-30	12
	36	A-36	15
Motor Unit Only		M-0	4
	12	M-12	8
	16	M-16	9
	20	M-20	11
	24	M-24	13
	30	M-30	16
	36	M-36	19



Weather Hoods

12 to 36 inches

- Fits automatic shutter mounting holes. Drilling is not required.
- Heavy gauge galvanized steel. Plated hardware.

